

# TECHNICAL DATA SHEET GEMÜ 617 HP/HPW

High Purity Plastic Diaphragm Valve 2/2-way, manually operated

## Description

High Purity manually operated 2/2 way plastic diaphragm valve in a compact design and with high flow capability. Diaphragm sealing at the valve seat. For corrosive and inert liquids and gases.

**Especially suitable for high purity media.**

## Construction

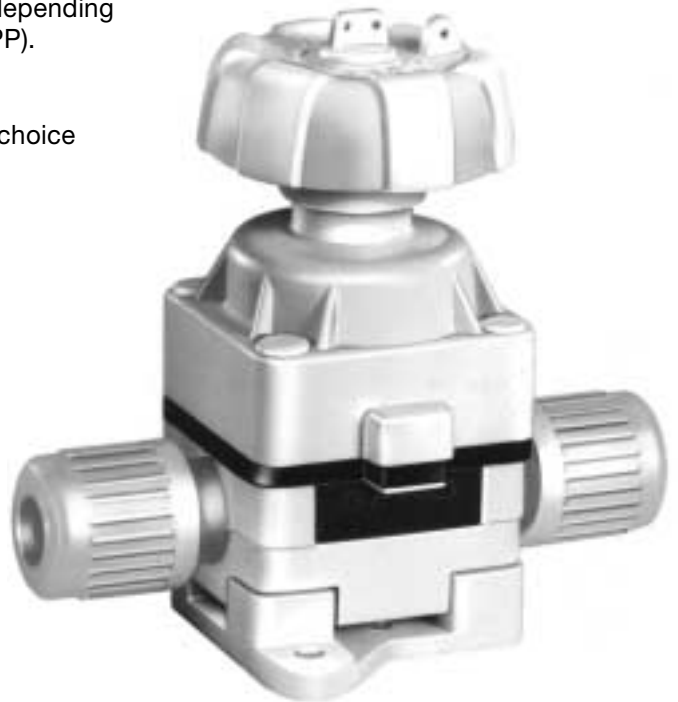
This valve is especially suitable for applications involving high purity media due to the use of high purity fluoropolymers such as PFA and PVDF, its cavity-free construction as well as being **manufactured under clean-room conditions**.

The valve body is available in various different materials depending on chemical and temperature requirements (PFA, PVDF, PP).

The compact construction of this valve makes it an ideal choice where space is at a premium.

## Advantages

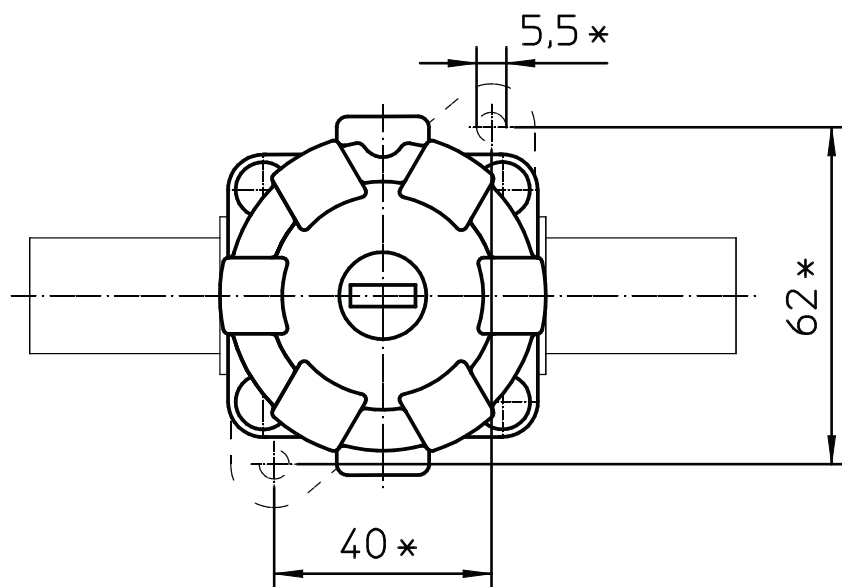
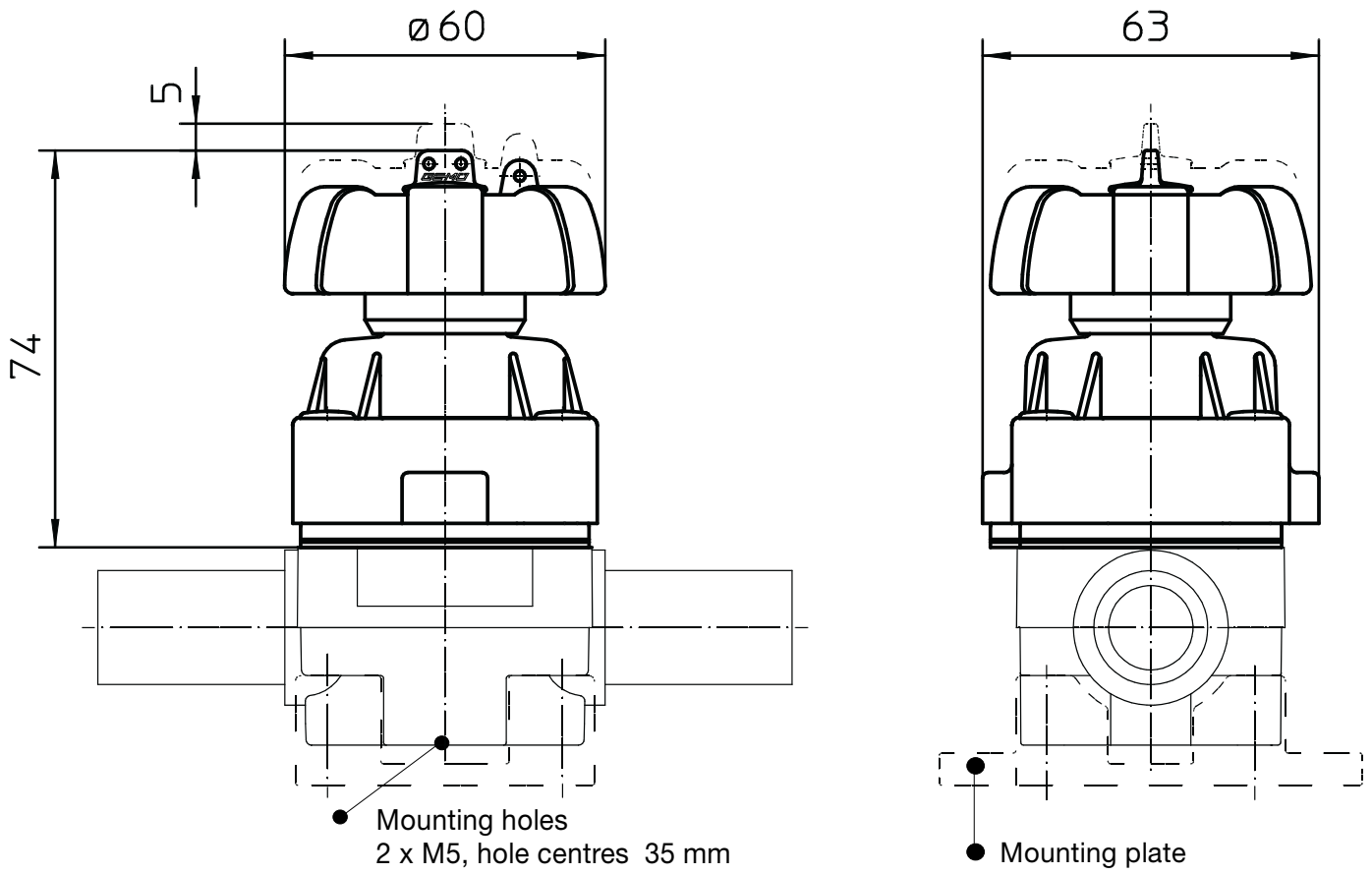
- Lowest contamination
- Use of high purity materials
- Cavity-free
- Compact design
- Optical position indicator fitted as standard
- Hermetic sealing
- Maintenance-free bonnet
- Optional mounting position
- Optional flow direction
- High flow capability
- Stable mounting plate for easy mounting



**GEMÜ 617 HPW**  
(HP design: Black actuator)

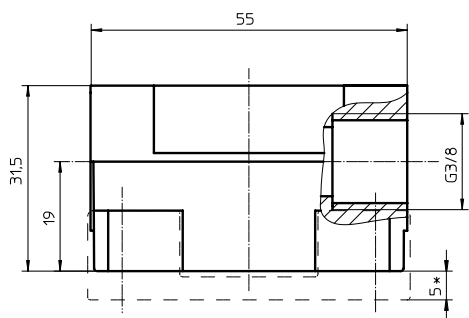
**GEMÜ**® VALVES, ACTUATORS  
AND CONTROL SYSTEMS



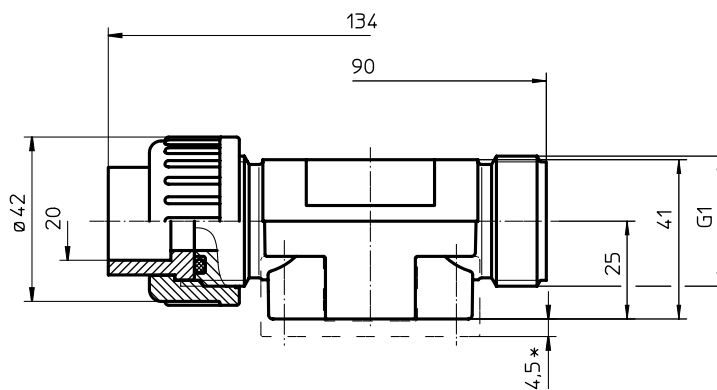


\* Dimensions in connection with mounting plate type 1041

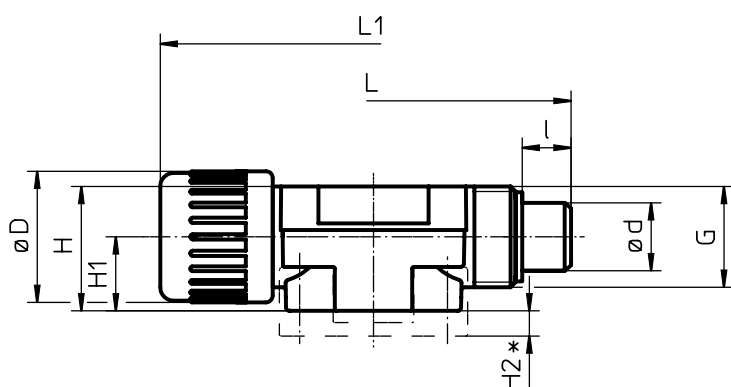
# Connections



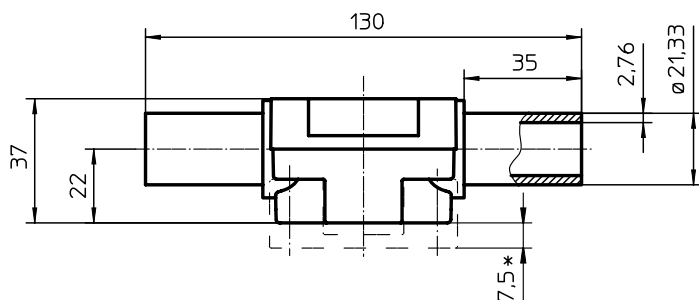
**Threaded sockets G 3/8 DN 12 (ref. no. 1)**  
Material ref. no. 20



**Unions DN 15 (ref. no. 7)**  
Material ref. no. 20



**Tube clamp fittings (ref. no. 75 and 77)**  
Material ref. no. 24 and 28



**Spigot ends, inch DN 15**  
OD 0,840" Schedule 40 (ref. no. 30)  
Material ref. no. 24

DN	OD	ID	d1	L	L1	I	H	H1	H2*	$\varnothing D$	G
10	0,500"	0,376"	14	122	128	15	27	16	8	27	M 20 x 1,5
15	0,750"	0,626"	20,2	118	130	14,5	37	22	7,5	39	M 30 x 2

\* Dimensions in connection with mounting plate type 1041

**GEMÜ® VALVES, ACTUATORS  
AND CONTROL SYSTEMS**

