

TECHNICAL DATA SHEET TYPE 604 HPW

High Purity Plastic Diaphragm Valve 2/2 way, pneumatically operated

Description

High Purity diaphragm valve, pneumatically operated 2/2 way in a compact design and with high flow capability. For corrosive and inert liquids and gases.

Especially suitable for high purity media.

Construction

This valve is especially suitable for applications involving high purity media due to use of high purity fluoropolymers such as PFA and PVDF, its cavity-free construction as well as being **manufactured under clean room conditions.**

The valve is operated by a maintenance-free pneumatic piston actuator which can be controlled by all inert gases.

The valve body is available in various different materials depending on chemical and temperature requirements (PFA, PVDF, PP).

The compact construction of this valve makes it an ideal choice where space is at a premium.

A built-in indicator indicates the valve position.

Advantages

Lowest contamination

All wetted parts are made of high purity PFA and PTFE or PVDF and PTFE.

Use of high purity materials

Cavity-free

Compact design

Optical position indicator fitted as standard

Maintenance-free actuator

Optional mounting position and optional flow direction

High Kv/Cv- value

Various accessories such as stroke limiter or electrical position indicator



Type 604 HPW

GEMÜ® VALVES, ACTUATORS
AND CONTROL SYSTEMS

TECHNICAL DATA SHEET TYPE 604 HPW

High Purity Plastic Diaphragm Valve 2/2 way, pneumatically operated

Working medium: Suitable for any corrosive or inert gas or liquid (limited by use of "TMAH"), especially high purity media, subject to the correct choice of body and diaphragm material. The valve will seal against flow in either direction up to full working pressure.

Working pressure: max. 6 bar, applied upstream

Control pressure: 6-7 bar

Max. working temperature: 90° C

Nominal size: DN 6

Kv/Cv-value: 13 l/min; 0,93 gall/min

Connections/Dimensions:

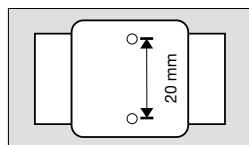
Connections	DN	Ref.no.
Threaded sockets G 1/4	6	1
Threaded sockets G 1/4 NPT	6	31
Flare connection 3/8"	6	75
with PVDF nut with PFA nut recommended for "TMAH"		77

Valve body material	Ref.no.
PFA inliner with PVDF (natural) casing	24
PFA-inliner with PP casing	28

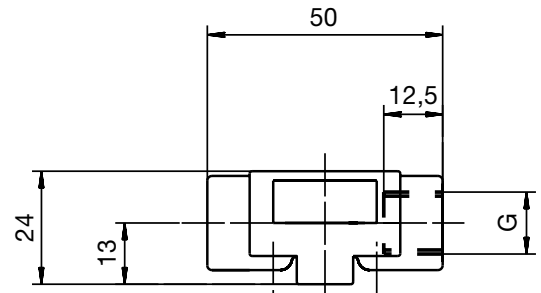
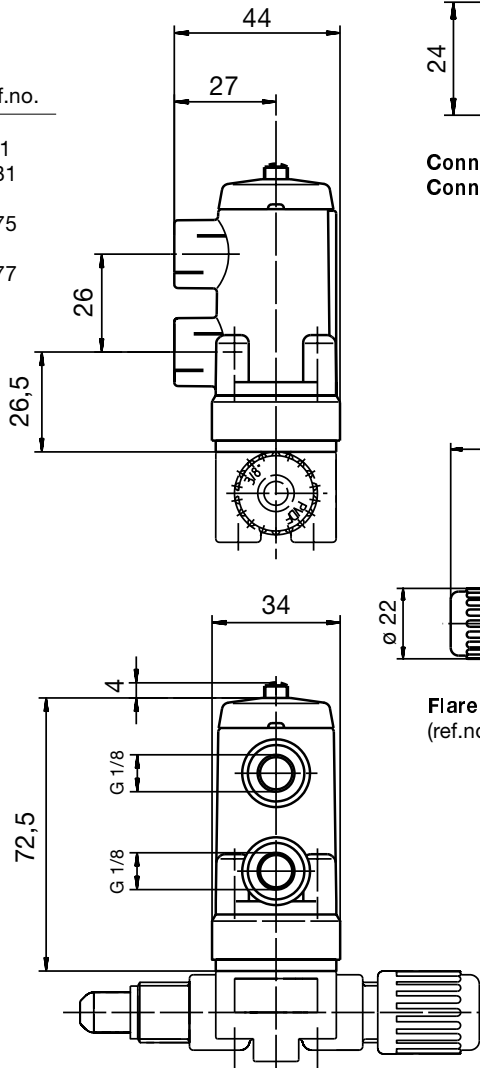
Diaphragm material	Ref.no.
PTFE	5A

Control function	Ref.no.
Normally closed	1
Normally open	2

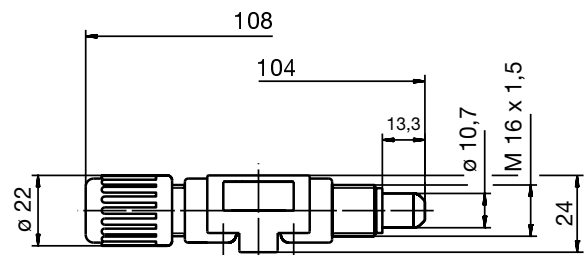
Mounting holes in the valve body (bottom)



Thread M5,
hole distance 20 mm



Connection female thread (ref.no.1) G 1/4, DN 6
Connection female thread (ref.no.31) G 1/4 NPT, DN 6



Flare connection 3/8", DN 6 = OD 0,375"/ID 0,251"
(ref.no.75 and 77)

Order example	604	6	D	75	24	5A	1	HPW
Type	604							
Nominal bore (mm)		6						
Body configuration (D)			D					
Connection (ref.no.)				75				
Body material (ref.no.)					24			
Diaphragm material (ref.no.)						5A		
Control function (ref.no.)							1	
Design								HPW



GEMÜ® VALVES, ACTUATORS
AND CONTROL SYSTEMS