

# TECHNICAL DATA SHEET TYPE 610 HP/HPW

## High Purity Plastic Diaphragm 2/2-way, pneumatically operated

### Description

High Purity diaphragm valve, pneumatically operated 2/2 way for corrosive and inert liquids and gases.

**Especially suitable for high purity media.**

### Construction

This valve is especially suitable for applications involving high purity media due to the use of high purity fluoropolymers such as PFA and PVDF, its cavity-free construction as well as being **manufactured under clean room conditions**.

The valve is operated by a maintenance-free pneumatic piston actuator which can be controlled by all inert gases.

The valve body is available in various different materials depending on chemical and temperature requirements (PFA, PVDF, PP).

The compact construction of this valve makes it an ideal choice where space is at a premium.

A built in indicator indicates the valve position.

### Advantages

Lowest contamination

All wetted parts are made of high purity PFA and PTFE or PVDF and PTFE.

Cavity-free

High Kv/Cv value

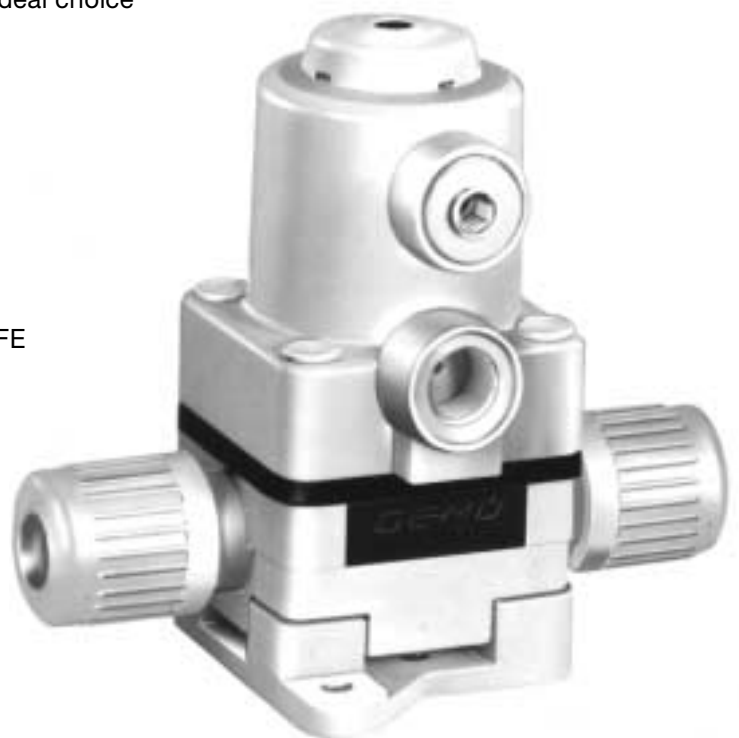
Optional mounting position and flow direction

Compact, weight-saving design

Optical position indicator fitted as standard

Various accessories such as stroke limiter or electrical position indicator

Stable mounting plate for easy mounting

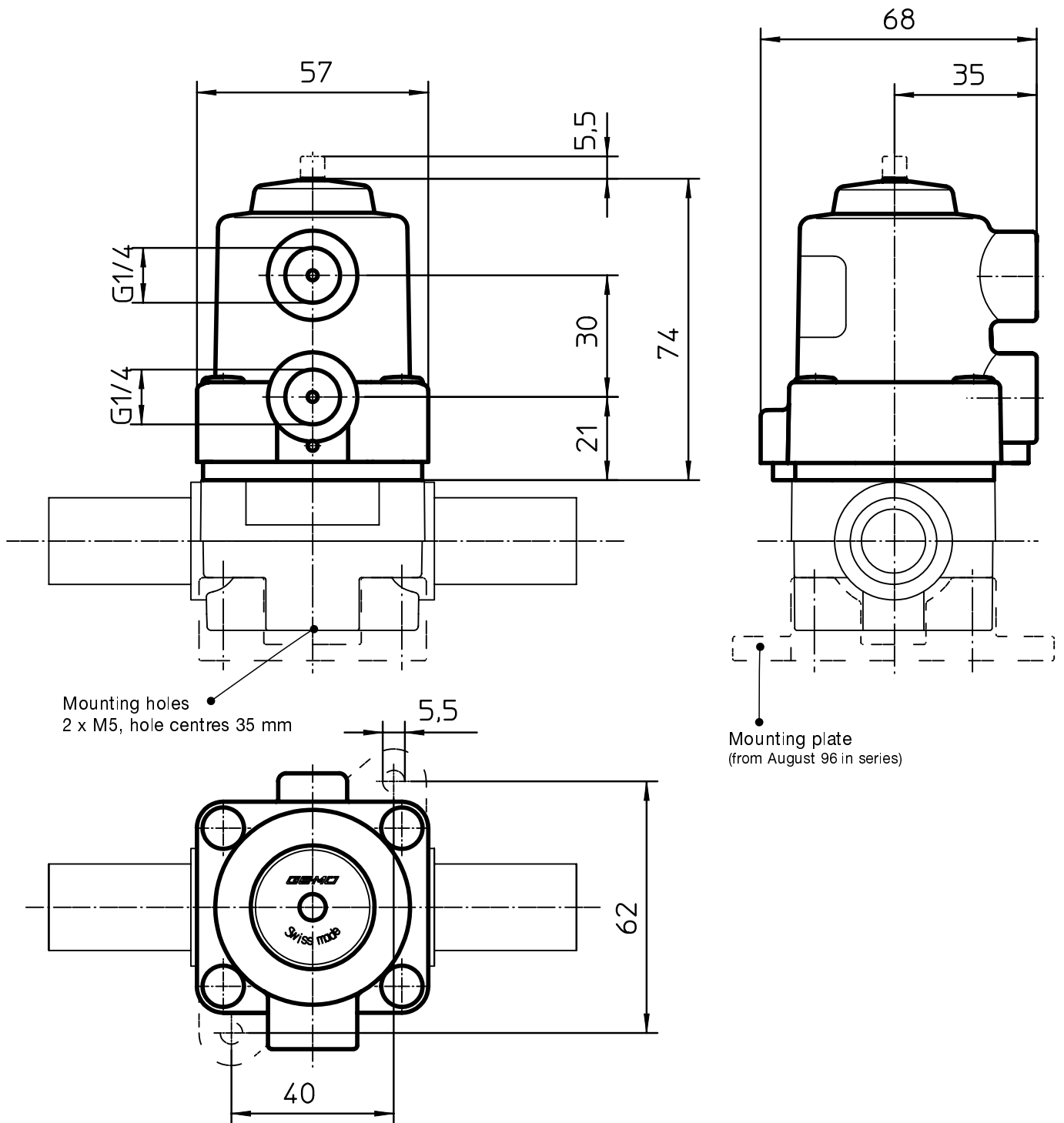


**Type 610 HPW**  
(HP design: Black actuator)

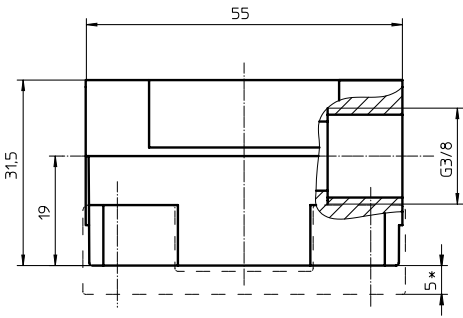
**GEMÜ**® VALVES, ACTUATORS  
AND CONTROL SYSTEMS



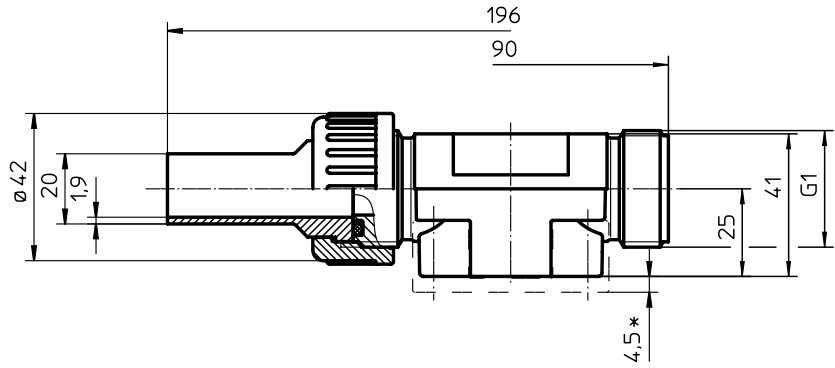
## Dimensions (mm)



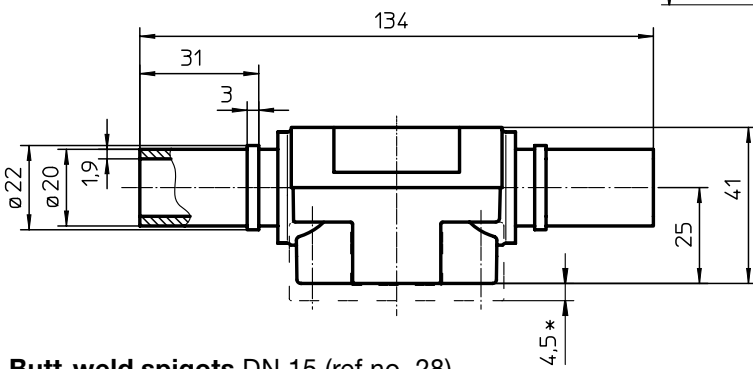
# Connections



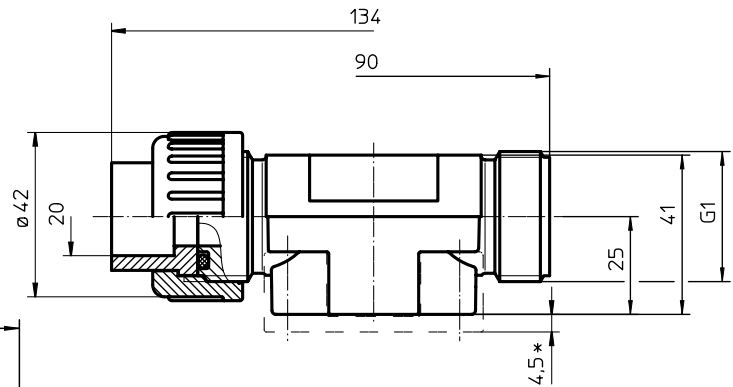
**Threaded sockets** G 3/8 DN 12 (ref.no. 1)  
Material - ref.no. 20



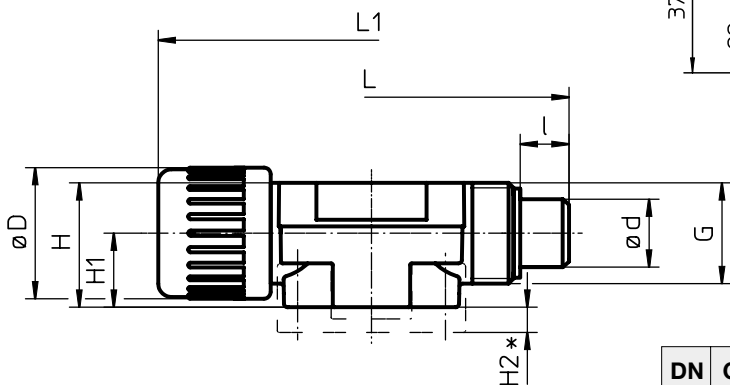
**True union and spigot ends**  
DN 15 (ref.no. 78) Material - ref.no. 20



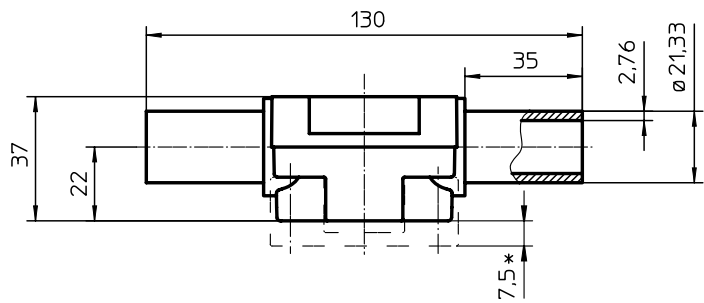
**Butt-weld spigots** DN 15 (ref.no. 28)  
Material - ref.no. 20



**Unions** DN 15 (ref.no. 7)  
Material - ref.no. 20



**Flare connection** (ref.no. 75 and 77)  
Material - ref.no. 24 and 28



**Spigot ends, inch** DN 15  
OD 0,840" Schedule 40 (ref.no. 30)  
Material - ref.no. 24

DN	OD	ID	d1	L	L1	I	H	H1	H2*	ø D	G
10	0,500"	0,376"	14	122	128	15	27	16	8	27	M 20 x 1,5
15	0,750"	0,626"	20,2	118	130	14,5	37	22	7,5	39	M 30 x 2

\* Dimensions in connection with mounting plate type 1041

**GEMÜ®** VALVES, ACTUATORS  
AND CONTROL SYSTEMS