

Electrical position indicator with microswitch and optical position indicator

Construction

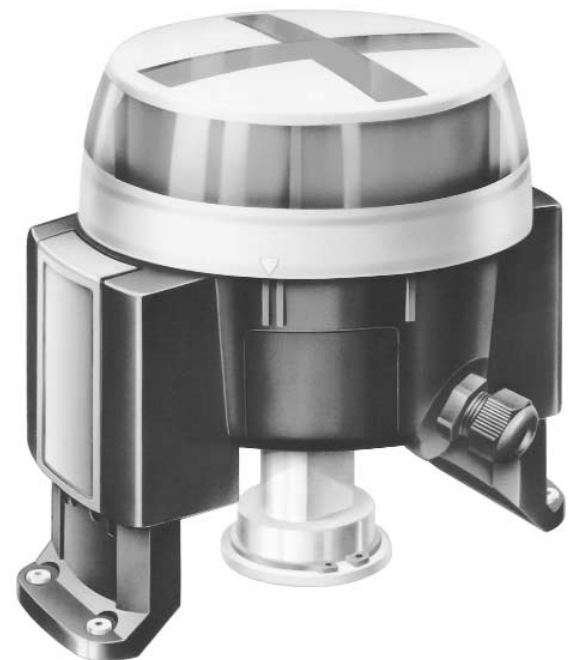
- Transparent cover (bayonet fixing)
- Stable water-proof plastic housing
- Optical indication as standard
- Universal trigger cams
- Removable mounting plate, either with microswitches or inductive sensors (direct switching or acc. to NAMUR)
- Height adjustable feet (can be turned inward or outward)

Features

- Easy setting of the trigger cams by means of a new setting system
- By rotating the feet 180° the microswitch can be used for VDI/VDE 3845 dimensions 80 mm and 130 mm
- Switch positions of straight through or 3-way valve bodies (T or L design) can be indicated

Advantages

- Using a single mount, the indicator can be adjusted to fit all standard connections and mounting dimensions
- Corrosion-resistant



Mounting dimensions

acc. to VDI/VDE 3845 for flange designs
30x80 and 30x130 (s. page 3)

Voltage range

4V/DC - 250V/AC

Materials

Cover	Lexan 143 R
Switching shaft	POM
Seals	NBR
PG cable glands / counternut	PA
Other plastic parts	ABS, T45
Hexagon socket screw	A2-70

Current range

1 mA - 5 A

Switching function

Change-over contact

Admissible temperatures

-20° C ...+70° C

Contacts

gold plated

Protection class

IP 67, DIN 40050, VDE 0470/EN 60529

Function

Ref. no.

OPEN/CLOSED

A00

OPEN

A01

CLOSED

A02

Indicator and switching range

Angle of rotation 0° ... 90°

Switch

Ref. no.

Crouzet 83 170 9

01

Cable entry

Clamp range
(bushed) 5 - 10 mm

Recommended cross section of wire

Cable ø 5-10 mm, max. 2,5 mm²

Electrical connection

Ref. no.

PG 13,5

00

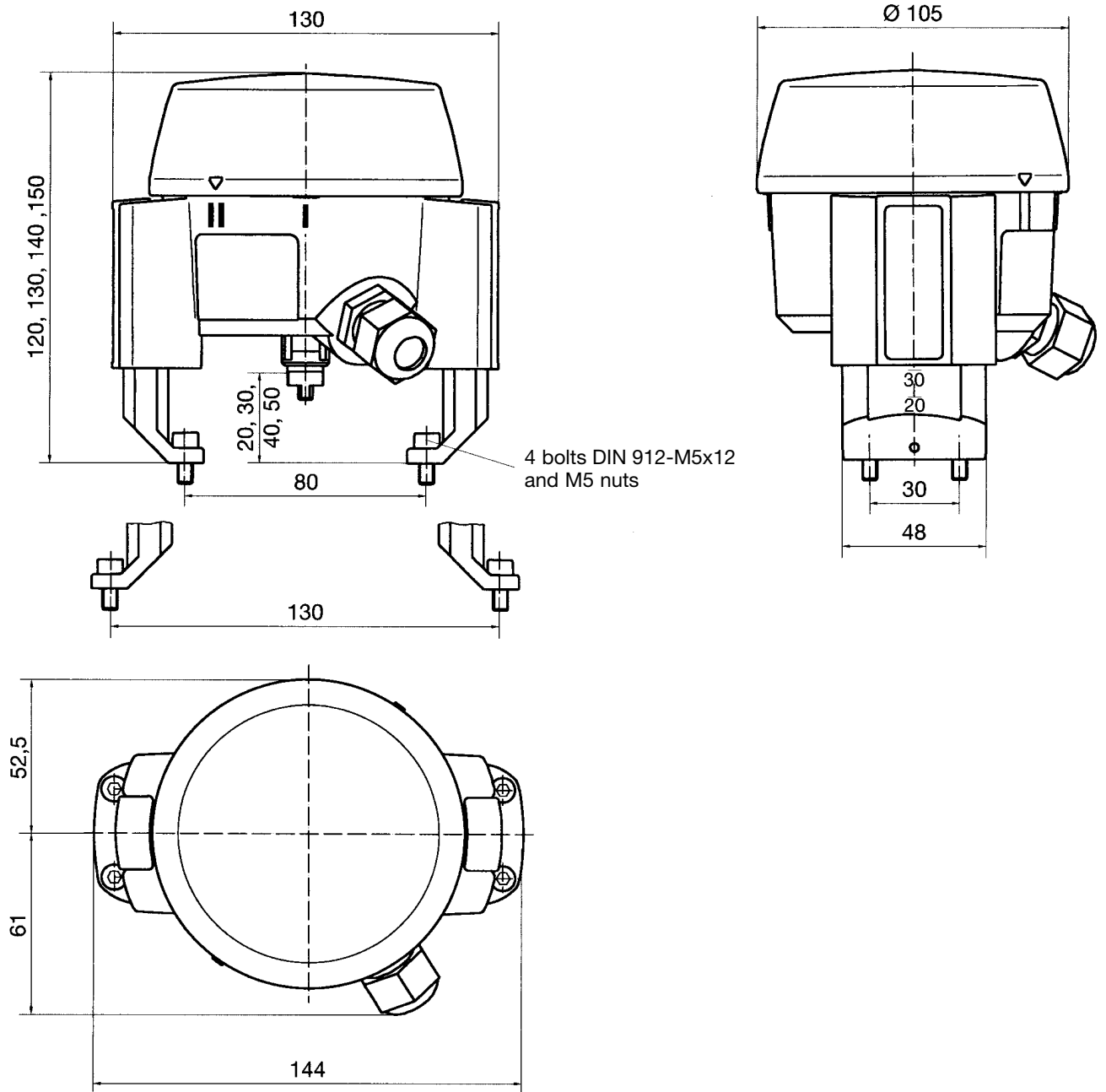
Other connections upon request

Order example

1227 000 Z A00 01 00

Type	1227	000	Z	A00	01	00
Accessories		Z				
Function (reference number)				A00		
Switch (reference number)					01	
Electrical connection (reference number)						00

Dimensions (mm)



Connection diagram

