

Electrical Position Indicator

Construction

- Electrical position indicator for GEMÜ types 410, 413, 415, 418, 423, 428
- The circuit is operated by two adjustable cam switches, the operating cams being positively connected to the valve spindle. The switching points can be adjusted by rotating the switch cams by means of a screwdriver. This can be done through openings in the side covers

Features

- Electrical and optical indication of the positions open and closed
- Integral LED indicators show whether the circuit is "open" or "closed" (green/red LED) and that the system voltage is present (yellow LED)

Advantages

- The electrical position indicator 1225 can also be retrofitted to all GEMÜ quarter turn actuators of types 410, 413, 415, 418, 423, 428
- The electrical position indicator can be fitted to the valve in any of four positions, 90° apart



Voltages

10 - 30 V DC (other voltages on request)

Switch rating

2.5 A to 24 V DC

Weight

170 g

Protection class

IP 40 (when fitted)

Recommended cross section dimension of cable

Cable - \varnothing 6 - 8 mm

Type of connection

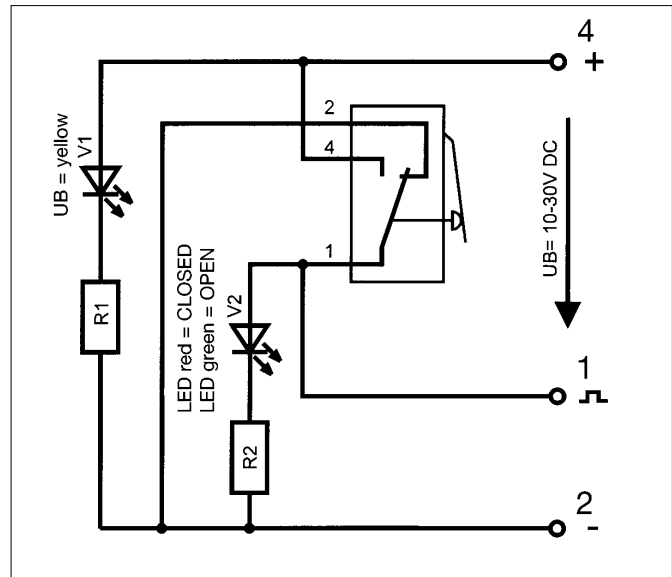
Reference number

PNP	10
NPN	20

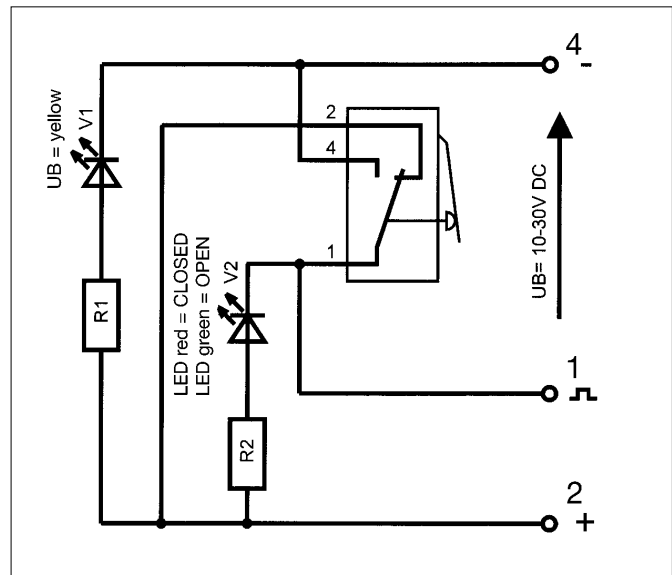
Index for valve adaptation

See price list (accessories)

Connection diagram PNP



Connection diagram NPN

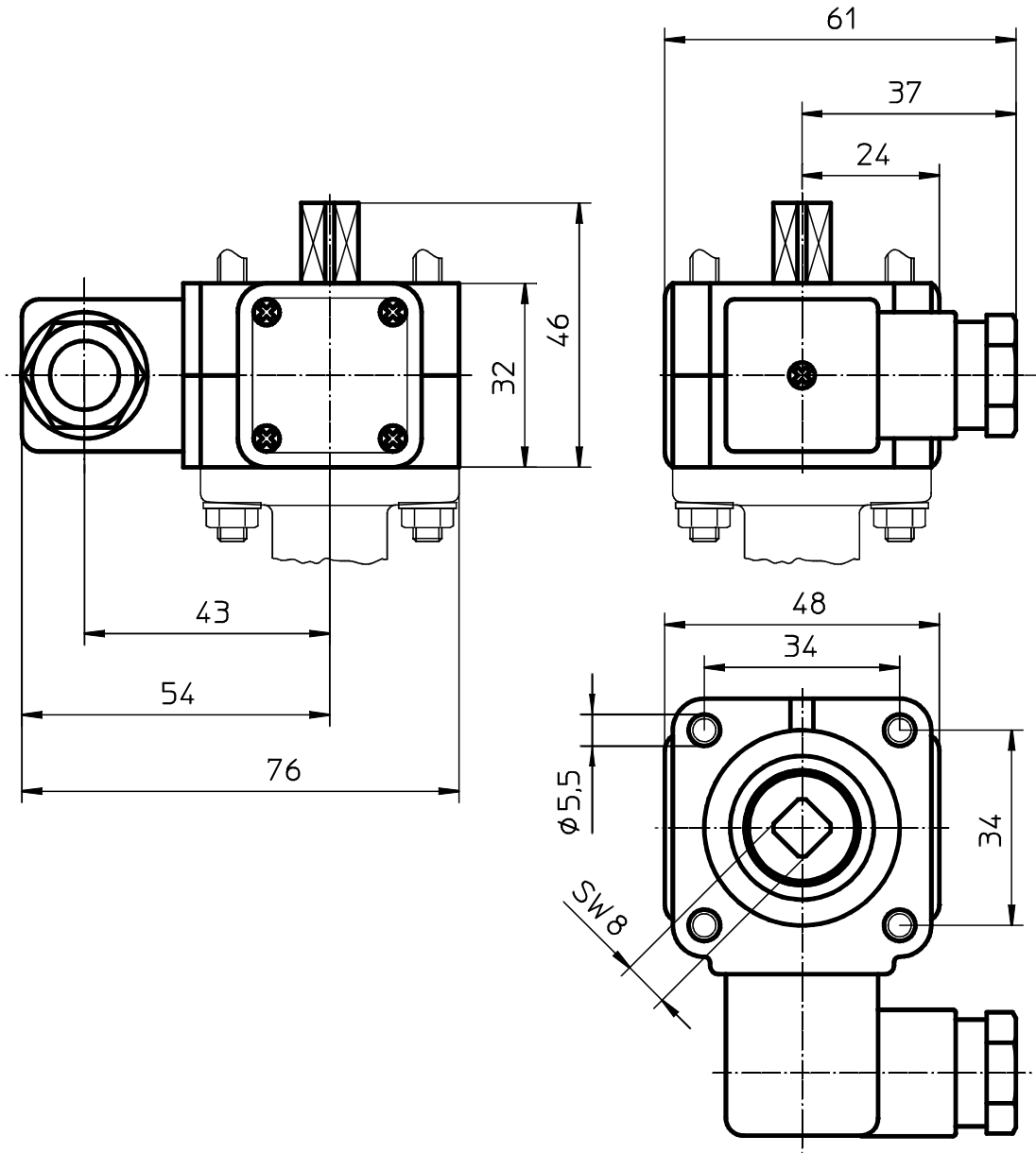


Order example

Type	1225	000	Z	10	00				
Type of connection (ref.no.)			Z	10					
Index for valve adaptation					00				

Please give the complete valve type key when ordering.

Dimensions (mm)



Arrangement of internal position switches

